

SPLICER SEAT

U-TECK has combined a longtime, craft-accepted design with a new polyethylene material to produce a rugged splicer seat that can be warranted for up to five years.

Features:

- Extremely rugged
- Convenient tool slot
- Traditional design
- Large sitting area
- Polyethylene material
- Textured surface
- Five-year warranty
- Available in grey & safety orange
- Tool slot in the top to hold your tools, connectors, or other small items
- Waterproof
- This seat is fitted to connect to our splicing table via the tether.



Conventional splicing machines can be attached to the Splicer Seat. The unique design of the seat allows it to be used at three different positions for varied heights. The Splicer Seat also makes an excellent footstool. With this seat, you will never need to purchase a replacement again.

Ordering Information

Description:	Product #:	Dimensions:	Weight:
Grey "P" Splicer Seat	55430	18"L x 14.75"W x 11.75"H	10LBS
Orange "P" Splicer Seat	55430-OR	18"L x 14.75"W x 11.75"H	10LBS

SPLICER SEAT

U-TECK has combined a longtime, craft-accepted design with a new polyethylene material to produce a rugged splicer seat that can be warranted for up to five years.

Features:

- Extremely rugged
- Convenient tool slot
- Traditional design
- Large sitting area
- Polyethylene material
- Textured surface
- Five-year warranty
- Available in grey & safety orange
- Tool slot in the top to hold your tools, connectors, or other small items
- Waterproof
- This seat is fitted to connect to our splicing table via the tether.



Conventional splicing machines can be attached to the Splicer Seat. The unique design of the seat allows it to be used at three different positions for varied heights. The Splicer Seat also makes an excellent footstool. With this seat, you will never need to purchase a replacement again.

Ordering Information

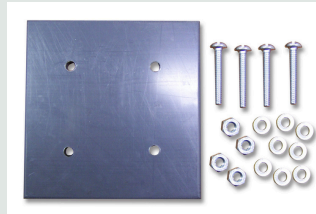
Description:	Product #:	Dimensions:	Weight:
Grey "P" Splicer Seat	55430	18"L x 14.75"W x 11.75"H	10LBS
Orange "P" Splicer Seat	55430-OR	18"L x 14.75"W x 11.75"H	10LBS

SPLICER SEAT ACCESSORIES



MS2 Splicer Adapter

Fits on your MS2 Splicing tool to easily attach and remove it from the splicer seat

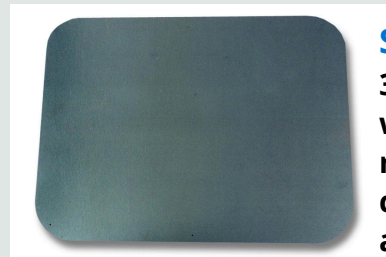


Tool Base Adapter
Assists you when permanently attaching your 710 splicing tool to the Splicer Seat



Seat Cushion

Thickly padded cushion in a weather-resistant cover. Comes complete with three large pockets for tools and materials.



Splicing Mat

3 ft x 4 ft rugged, washable and reusable pad that covers the work area. Keep your cables out of the dirt and your tools out of the mud and weeds!



Universal Splicing Head Adapter

Used to temporarily attach either a 710 or MS2 splicing machine to the Ergonomic Seat or the 'P' Splicer Seat. Can be mounted in several locations as desired by individual splicers.

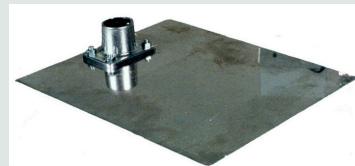


Retro Fit Kit

Allows the upgrade from the Splicer Seat to the Ergonomic Seat. Includes the splicer seat adapter, the Ergonomic Seat and even the drill bits to drill the holes.

Splicing Arm Base

Fits under your Splicer Seat to attach your modular splicing tool when you do not want to attach it directly to the seat.



710 Splice Adapter

Fits on your 710 modular splicing tool to easily attach and remove it from the Splicer Seat



Ordering Information

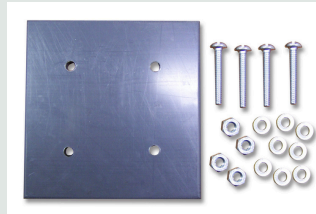
DESCRIPTION:	PRODUCT NUMBER:	PACKAGING:	WEIGHT:
MS2 Splice Adapter	55420	1 EACH	2 lbs.
710 Splice Adapter	55500	1 EACH	1 lb.
Tool Base Adapter	55450	1 EACH	1 lb.
Seat Cushion	55430-CU-BLK	1 EACH	1 lb.
Splicing Mat	55430-MAT	1 EACH	3 lbs.
Splicing Arm Base	55430-BASE	1 EACH	6 lbs.
Universal Splice Adapter	55460	1 EACH	16 lbs.
Retro Fit Kit	55430-RETROKIT	1 EACH	2 lbs.

SPLICER SEAT ACCESSORIES



MS2 Splicer Adapter

Fits on your MS2 Splicing tool to easily attach and remove it from the splicer seat

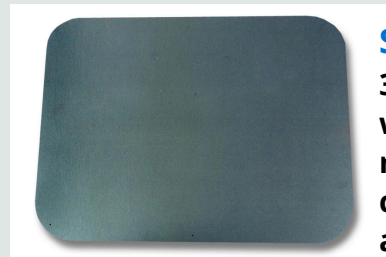


Tool Base Adapter
Assists you when permanently attaching your 710 splicing tool to the Splicer Seat



Seat Cushion

Thickly padded cushion in a weather-resistant cover. Comes complete with three large pockets for tools and materials.



Splicing Mat

3 ft x 4 ft rugged, washable and reusable pad that covers the work area. Keep your cables out of the dirt and your tools out of the mud and weeds!



Universal Splicing Head Adapter

Used to temporarily attach either a 710 or MS2 splicing machine to the Ergonomic Seat or the 'P' Splicer Seat. Can be mounted in several locations as desired by individual splicers.



Retro Fit Kit

Allows the upgrade from the Splicer Seat to the Ergonomic Seat. Includes the splicer seat adapter, the Ergonomic Seat and even the drill bits to drill the holes.

Splicing Arm Base

Fits under your Splicer Seat to attach your modular splicing tool when you do not want to attach it directly to the seat.



710 Splice Adapter

Fits on your 710 modular splicing tool to easily attach and remove it from the Splicer Seat



Ordering Information

DESCRIPTION:	PRODUCT NUMBER:	PACKAGING:	WEIGHT:
MS2 Splice Adapter	55420	1 EACH	2 lbs.
710 Splice Adapter	55500	1 EACH	1 lb.
Tool Base Adapter	55450	1 EACH	1 lb.
Seat Cushion	55430-CU-BLK	1 EACH	1 lb.
Splicing Mat	55430-MAT	1 EACH	3 lbs.
Splicing Arm Base	55430-BASE	1 EACH	6 lbs.
Universal Splice Adapter	55460	1 EACH	16 lbs.
Retro Fit Kit	55430-RETROKIT	1 EACH	2 lbs.